

# 2024 National Awards And Recognition Manual

*Recognizing the impact of our members and projects*

The word "EVOLVE" is displayed in a bold, sans-serif font. The letters "EV" are in a bright blue color, and the letters "LVE" are in a purple color. A white butterfly silhouette is positioned over the letter "V", with its wings spread. The background of the banner is dark purple with a subtle floral pattern of red buds.

**EVOLVE**

[@JCIUSA](#) [#EVOLVE](#)

# Table of Contents

## Table of Contents 1

**What's New 4**

**Welcome Letter from our Program Manager 5**

**Purpose 6**

**General Eligibility Requirements 6**

**Certifications and Submissions 7-8**

Presidential Certification 7

Submissions 7-8

**Judge Requirements 9-10**

State Required Judges 9

Important Note 10

**Video Submissions 10-11**

Tips for Video Submissions 10

Video Format Requirements 11

**Photo Submissions 11**

**Video and Photo Deductions 11**

**Shared Media and Documentation 11**

**Notifications & Updates 11**

**Local Recognition Awards 12-18**

**Most Outstanding Local Chapter Single Project Entry (SPE) 12**

Local Economic Development Program 12

Inter-organization Collaboration Project 12-13

Local Personal Skill Development Program 13

Local Growth and Development Program 13

Local Community Empowerment Program 14

Long-term Local Community Development Program 14-15

Global Goals Project 15-16

Best Local Peace Project 16

Tips for Classifying SPE Submissions 16-17

Single Project Entry Submission 17

Judging Criteria 17

Recognition 18

Best Project of the Year Award 18

**Most Outstanding Local Chapters 19-21**

Most Outstanding New Local Organizations 19

Most Outstanding Local Organizations 19

Most Outstanding Chapter in the Nation 20

Most Outstanding Local Chapters Submission 20

Judging Criteria 21

Recognition 21

**Most Outstanding Innovation from a Chapter 21-22**

Visionary Award 21

Most Outstanding Innovation Submission 22

Judging Criteria 22

Recognition 22

**Most Outstanding Local Members 23-25**

JCI USA Youth Spotlight 23

Most Outstanding New Members 23

Most Outstanding Local Members 24

Most Outstanding Families 24-25

Most Outstanding Members Submission 25

Judging Criteria 25

Recognition 25

**Most Outstanding Individual Growth of a Member 26-27**

Empowerment Award 26

Most Outstanding Individual Growth of a Member Submission 26

Judging Criteria 27

Recognition 27

**Most Outstanding Local Officers 27-28**

Most Outstanding Local Chapter Officer 27

Most Outstanding Local Presidents 27

Most Outstanding Local Officers Submission 28

Judging Criteria 28

Recognition 28

**State Recognition Awards 29-33**

**Most Outstanding State Programs 29-30**

Best State Flagship Programs 29

Dennis Hamilton Memorial Award Judging Criteria 29

Best State Growth and Development Program 29-30

Steve Little Memorial Award Judging Criteria 30

Most Outstanding State Programs Submission 30

Recognition 30

**Most Outstanding State Organizations 30-31**

Best State Organizations 30  
Most Outstanding State Organizations Submission 30  
Judging Criteria 31  
Recognition 31

### **Most Outstanding State Officer 31-33**

Outstanding State Membership Director 31  
Outstanding State Auxiliary Officer or Committee Member 31  
Most Outstanding State Organization Executive Officers 32  
Most Outstanding State Presidents 32  
Most Outstanding State President in the Nation 32  
Most Outstanding State Officers Submission 33  
Judging Criteria 33  
Recognition 33

### **National Recognition Awards 34-36**

#### **Outstanding National Program Manager 34**

Outstanding National Program Manager 34  
National Program Manager Submission 34  
Judging Criteria 34  
Recognition 34

#### **Most Outstanding National Vice President 35**

Most Outstanding National Vice President 35  
Don Cavelli Memorial Award Submission 35  
Judging Criteria 35  
Recognition 35

#### **Special Partners 36**

Special Partner Award 36  
Rob Ray Memorial Award Submission 36  
Recognition 36

#### **Top Membership Recruiters 36-37**

Membership Recruiters (25+) 36  
Top Membership Recruiters Submission 36  
Recognition 37

#### **Chapter Growth 37**

Chapter Growth (Double/Triple) 37  
Chapter Growth Submission 37  
Recognition 37

#### **Presidential Medallions 38**

Presidential Medallions 38  
Submission 38  
Recognition 38

## **Appendices 39-47**

### **Appendix A - Year-End Awards Reference Chart 39-42**

Local Recognition Awards 39-40

State Recognition Awards 40-41

National Recognition Awards 41-42

### **Appendix B - Best Practices for Creating Nominations 43-44**

### **Appendix C - National Submissions for International Awards 44-45**

National Categories for International Advancement 44-45

Anticipated Submissions Timeline for International Awards 45

### **Appendix D - Scoring Rubrics 46**

### **Appendix E - 2024 National Awards Committee 47**

Program Managers

General Members

JCI USA Executive Members / Focus Area of Impact

### **2024 Awards Program Timeline & Due Dates 48**

## **What's New to manual**

- 1) Added video and photo required to general eligibility page
- 2) In best practice page added the reminder to not forget video and photos
- 3) Clarified the video submission part
- 4) Added the judges requirements to include additional judges
- 5) Updated the video, photos, and judges deductions
- 6) Update award criteria and weighted scoring to reflect emphasis on project area
- 7) Included awards email
- 8) Updated Office hours and timeline

## Welcome Letter from our Program Manager

Dear JCI USA,

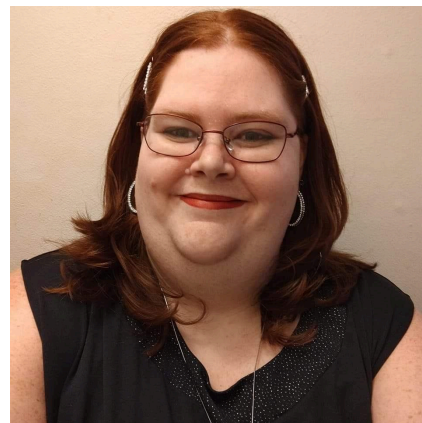
I want to thank you for taking the time to participate in the Awards and Recognition Program. Please don't be afraid to reach out with any questions you may have, there is no such thing as a stupid question. If this is your first time submitting award nominations, you may be asking yourself why you should submit nominations. The answer is pretty simple: You have amazing projects and people we would like to recognize! We can't be everywhere, so we need your help to recognize those outstanding projects and people in your chapter and/or state. The one big piece of advice I have for you all, is submit as much information as you can. As that gives us a better picture of why you think this nomination should be recognized, and don't forget pictures!

I look forward to seeing all the amazing nominations that will be sent and, once again, please don't hesitate to reach out with your questions. You can reach me anytime, as I am a night owl so there isn't time that is too late for me.

Sincerely,

Amanda Birch, IA

2024 Awards Program Manager



## Purpose

The JCI USA Memorial Awards and Recognitions Program is designed to recognize the impact of our members' efforts at the local, state, and national levels. This impact can be through projects, chapter/state management and/or recruitment efforts.

## General Eligibility Requirements

- State and local organizations MUST have all 2024 dues paid in full by January 31, 2025 to be eligible.
- Recognition is based on the progress made between January 1, 2024 and December 31, 2024.
  - Multi-year projects that are submitted must be completed during the 2024 calendar year to be eligible.
- All decisions of the JCI USA Awards Committee and JCI USA National President are final and irrevocable.
- Video with either narration or a slideshow with voiceover and photos are required
- Entries must be submitted via the digital format provided by the JCI USA Awards Committee.
  - Extra Pictures or other substantiation may be submitted with the form. These items should enhance the form submission and are not to replace content on the form.
- Once an entry has been submitted by a chapter, the entry must then be approved by the President of the State Organization who held office during the 2024 awards year.
  - If there is no state level with a presiding State President, then the JCI USA National Vice President (NVP) assigned to that state will be the certifying official for all award entries.
- All individuals nominated for recognition must be members in good standing as of December 31, 2024.
  - Only entries that are certified by a State President or JCI USA Vice President will be eligible for consideration in the JCI USA Memorial Awards Program.

# Certifications and Submissions

## Timeline Updated for Year End 2024

### Presidential Certification

2024 State Presidents will be asked to certify their States submissions through a Form that will be available in the document library by November 1, 2024. This certification Form will contain information on projects, programs, and individual honors as intended for submission by the State Organization. The Certification Form will also ask for Names and Contact information of Judges being provided by the State. There will be no penalty to states who certify a Chapter or Member for recognition, but no submission is received.

Submission certifications must be completed no later than 11:59 PM Hawaii Standard Time (HST) on January 20, 2025. Any certifications not received by the deadline will be deemed ineligible. State Presidents will submit forms by email to [awards@jciusa.org](mailto:awards@jciusa.org).

### Submissions

Submissions for all categories of recognition will be accepted through January 30, 2025 at 11:59PM HAWAIIAN-ALEUTIAN STANDARD TIME, via the Submissions Portal which can be found on the JCI USA website. Any submissions received after this date or received without proper certification by a State President or JCI USA National Vice President will be ineligible for judging and recognition.

All submissions will be completed in the Submissions Portal. Unless arrangements are made directly with the JCI USA Awards Chair, no submissions will be accepted through other means. The Submission Portal will be made available by November 1, 2024 and will close at 11:59 PM HST on January 30, 2025.

Submission Forms will be made available by November 1, 2024 to provide more time for the preparation of submissions. All Forms will be available in the JCI USA Library found online at [www.jciusa.org](http://www.jciusa.org).

Once a submission is complete, you should receive an email confirming the submission has been received. If you do not receive an email, please submit again. If you have questions or need support with the portal please contact the JCI USA Awards Chair or other designated Committee Members at [awards@jciusa.org](mailto:awards@jciusa.org)





To ensure that the correct files are associated together for your submission please follow the approved standard naming process for your file attachments:

[AwardName\\_StateOrganization\\_Project/Nominee](#)

For example a Nothing But Nets Poker Run in Texas would be saved as:

**UNSDG\_TX\_NothingButNetsPokerRun.pdf** or an outstanding state officer from Florida would be labeled: **Trafton\_FL\_Smith.pdf**

Submission files can be a .mp3, .mp4, .pdf, .doc, .docx, .png, or .jpg file type. Please note if other file types are submitted it could be possible that the judges and/or the JCI USA Awards Committee will be unable to view for judging purposes. For large video files we suggest uploading to YouTube and providing a link to the content for viewing. This also ensures the video file type will not have a compatibility issue.

## Judge Requirements

### State Required Judges

Each State Organization that submits for recognition is required to provide members to assist with judging based on the chart below:

Number of Entries	Number of Judges
1-10	1
11-20	2
21-30	4
31 +	5

NOTE: These are **minimum** requirements. Should a state wish to submit additional judges, they may with permission of the National Awards Committee Co-Chairs. **If a state submits more than the required judges, all judges will be held to the same requirements.**

**A qualified judge is one who:**

- has previously served as a National Awards Judge, has submitted award nominations to state or national, or is selected and approved by their state organization;
- is currently a member of a local JCI chapter or, if outside the JCI USA age limit, is a JCI USA Ambassador or a JCI Senator;
- has been an active JCI member for a minimum of one (1) year;
- **is not currently serving as the 2024 State President or Immediate Past State President.**

### Judge's Requirements

Judges are required to perform the following tasks:

- Have a WhatsApp account to receive judging updates
- Sign acknowledgement form emailed to each judge no later than February 1st, 2025.
- Attend the scheduled judge's meeting on February 6, 2025 at 8pm.
  - If a judge can not make the determined scheduled meeting, they

will need to make necessary arrangements with the Awards Chair to meet at another time.

- Read and review assigned submissions.
- Judge and provide unbiased scoring of assigned submissions by predetermined deadlines.
- Provide constructive feedback on assigned submissions.
  - Feedback from judges will be provided to state organizations during scheduled Office Hours after the Year End Convention.
- Notify the Awards Chair no later than February 3, 2025 if they are not able to fulfill the judging role.
  - In the event of a judge not able to fulfill their role, the state must provide an alternate judge no later than February 5th, 2025.
  - It will be up to the Awards Committee to make any exceptions due to unforeseen circumstances on these deadlines.

## \*\*IMPORTANT NOTE\*\*

**If a judge fails to meet all the required expectations, 15% of the total points awarded to that state will be deducted from that state per judge who fails to adhere to the expectations.**

## Video Submissions

To more effectively prepare for the video requirement of international awards, videos will now be part of our awards submission process. **Videos do not take the place of the submission form, it is to help enhance the submission, you still have to submit both!**

### Tips for Video Submissions

- Videos may be filmed on a smartphone. Submissions will NOT be judged based on the quality of video - instead it is an opportunity to showcase the project in your own words.
- **Voiceover is mandatory if it's a slideshow of photos. If it's a video, narration is mandatory.**
- **Voiceover or narration must be clear and easy to understand.**
- All other music and sounds are not required.

## Video Format Requirements

- MOV or MP4 format.
- **Video submissions must be submitted as a Google Drive link**
- Filmed horizontally.
- File size limitations: No special requirements.
- Video length: **If you are over the maximum length there will be a deduction**
  - Minimum 30 seconds
  - Maximum 45 seconds

## Photo Requirements

- **Submit 2-3 photos per section on the submission forms to showcase the planning, event and impact. The photos should correlate to the section.**
- **Photos can't be duplicates**

## Video and Photo Deductions

- If there is NO VIDEO 10% deduction
- If the video is under or over the time limit 5% deduction
- If not enough photos 5% deduction

## Shared Media and Documentation

Please note that any items submitted for substantiation (photo, video, social media posts, letters of recommendation, etc.) may be used by JCI USA for promotional purposes. Refer to Page 9 for the approved file-naming process.

*Although photos and other non-video documentation are not required for most categories, they are highly recommended sources of information to include with your submissions. These would include any press releases, social media posts, etc.*

***Please note that certain categories require a headshot photo or letters of recommendation. Please review each award category for specific requirements.***

## Notifications & Updates

Make sure to check your inbox and follow our social media accounts for additional updates!

# Local Recognition Awards

## Most Outstanding Local Chapter Single Project Entry (SPE)

Based solely on its primary purpose, each Single Project Entry must be placed into one (1) of the following eight (8) award categories for judging. Each of these categories are not only acknowledged by JCI USA but also JCI.

### 1. Local Economic Development Program

Programs conducted with the goals of creating, increasing, or improving business and economic opportunities and/or productivity in the local community. Also, this includes strategic planning projects and programs conducted to raise funds to pay for the operation and expenses of the local JCI chapter. (NOTE: The Project Management Guide's (PMG) primary purpose must state that the money is benefiting the chapter – not a charitable donation or organization.) Projects that obtain positive recognition for the chapter or establish, maintain, or improve a favorable relationship between the chapter and the public would also fall under this category.

*Project Examples:* Chamber of Commerce involvement, How to Start Your Own Business, Investment Clubs, Speakers from Successful Local Companies, How to Write a Project Management Guide, Planning Needs and Analysis, Record Keeping, Board Retreats, Short-term and Long-term Planning, Haunted House, Parking Cars, Raffle, Running a County Fair, Press Releases, Distinguished Service Awards, Parades, Pageants, Newsletters, Websites, Marketing or Public Relations Training, etc...

*Judging Criteria:* Objectives, Planning, Finance, and Execution. Impact on Local Organizations Brand awareness. Impact on local organizations brand awareness. Impact on local organizations finances. Impact on the local economy. Long term impact. Added value to JCI and stakeholders.

### 2. Inter-organization Collaboration Project

Projects conducted to provide benefit to chapters and their members from collaborating with members of other JCI USA and JCI organizations. Local chapters can increase their impact by working together with other organizations. This category also includes some projects conducted for State, JCI USA and JCI emphasis programs.

*Project Examples:* Twinning, Any collaboration between Region, State, JCI USA, or

JCI chapters, etc... (NOTE: PMG's primary purpose must state if the project is a State emphasis program if it is not obvious but the name. ex: To raise money for the JCI Nevada's state priority project, the Las Vegas Children's Home.)

*Judging Criteria:* Objectives, Planning, Finance, and Execution. Impact on Local Organization. Impact on local organizations brand awareness. Impact on local organizations finances. Impact on the local economy. Long term impact. Added value to JCI and stakeholders.

### 3. Local Personal Skill Development Program

Programs conducted that further the JCI USA Mission by creating development opportunities for young people to create positive change and developing the skills of individuals. This category also includes projects that provide social opportunities (chapter activities), as well as family involvement opportunities for chapter members and their families.

*Project Examples:* Time Management, Public Speaking, Family Day at the Zoo, New Member Orientation, How to Deal With Difficult People, A speaker explaining the principles of Buddhism, Putt-Putt Golfing, Movie Night, Passport to Civic Leadership, How to Change a Flat Tire, Chapter Awards, etc...

*Judging Criteria:* Objectives, Planning, Finance and Execution. Added value to JCI members and stakeholders. Impact on local organizations brand awareness. Impact on local organizations membership growth. Impact on local organizations finances. Long term impact of the project.

### 4. Local Growth and Development Program

Programs conducted that aim to grow JCI USA to create development opportunities for more young people in their community. This category includes member recruitment, and recruitment drives to establish new chapters or save existing chapters.

*Project Examples:* M-Nights, Door-to-Door Membership Recruiting, Growth Week Activities, Chartering a Chapter, etc...

*Judging Criteria:* Objectives, Planning, Finance and Execution. Impact on local organizations membership growth. Impact on local organizations brand awareness. Added value to JCI members and stakeholders. Impact on local organizations finances. Long term impact of the project.

## 5. Local Community Empowerment Program - *William B. Robertson Award*

Programs conducted that are designed to promote or improve the quality of life for people in the community and assist with community needs and extend the JCI USA Mission. Included in this category would be projects that raise funds for non-JCI USA programs and charities in the local community and for children and youth which promote and encourage their involvement in activities and/or the learning of personal and leadership skills. Government involvement in all areas of the local, state and national governmental process, plus projects designed to provide the education of laws and governmental processes would be in this category. Also included in this category are projects conducted to improve the natural world, especially the preservation, management, and care of natural and community resources.

*Project Examples:* Game Night at the Senior Citizens Center, hosting a “How to Buckle in a Child Seat” event, Model Legislation, Get Out the Vote, Meals on Wheels, Political Debates, Blood Drive, Collecting canned food for the local food pantry, Working at a homeless shelter, Adopt-A-Highway, Planting trees in a park, Phone book recycling, Easter Egg Hunt, Reading to kindergarteners, Kid Care fingerprinting, A youth leadership weekend for high school students, T-ball tournament, Summer soccer league, Raising money to help a local person get a kidney transplant, Holding a car wash for the domestic violence shelter, Collecting coins for the Ronald McDonald House, Selling raffle tickets to raise money to help a local dance troop to compete at out-of-state finals, A fundraiser for a camp for children supported as a “emphasis” or “priority” project by your state (ex: Camp JCI Virginia), etc...

*Judging Criteria:* Objectives, Planning, Finance and Execution. Added value to JCI members and stakeholders. Impact on local organizations brand awareness. Impact on local organizations membership growth. Impact on local organizations finances. Long term impact of the project.

## 6. Long-term Local Community Development Program - *Dr. Jerry Bruce Memorial Award*

Projects and programs run over a period of more than one year to improve the community and extend the JCI USA Mission. Similar to the “Local Community Empowerment Program” category, but the duration of the project would be greater than one year.

*Project Examples:* See “Local Community Empowerment Program” award category.

*Judging Criteria:* Objectives, Planning, Finance and Execution. Added value to JCI members and stakeholders. Impact on local organizations brand awareness. Impact on local organizations membership growth. Impact on local organizations finances. Long term impact of the project.

## 7. Local Global Goals Project

Projects that are specific to the goals listed, that work with the Global Goals

In 2015, the world agreed to an ambitious set of 17 Sustainable Development Goals (SDGs), and 169 associated targets. The SDGs seek to catalyze a new development paradigm that treats social, economic, and environmental progress as indivisible. Efforts to protect, restore, sustainably manage, and equitably share the benefits of biodiversity will be essential to advancing and sustaining the SDGs. Of particular importance is the role of biodiversity in reducing poverty, fostering food security, sustaining livelihoods, and generating economic growth.

Goal 1: No Poverty

Goal 2: Zero Hunger

Goal 3: Good Health and Well-Being

Goal 4: Quality Education

Goal 5: Gender Equality

Goal 6: Clean Water and Sanitation

Goal 7: Affordable and Clean Energy

Goal 8: Decent Work and Economic Growth

Goal 9: Industry, Innovation and Infrastructure

Goal 10: Reduced Inequalities

Goal 11: Sustainable Cities and Communities

Goal 12: Responsible Consumption and Production

Goal 13: Climate Action

Goal 14: Life below Water



Goal 15: Life on Land

Goal 16: Peace, Justice, and Strong Institutions

Goal 17: Partnership for the Goals

*Project Examples:* For the best examples of Global Goals projects, log on to the JCI Website at [www.jci.cc](http://www.jci.cc) and find the heading “Programs.” Select “Project Gallery” then use the dropdown menu to choose your options. If you have difficulties, contact the National Awards Committee.

*Judging Criteria:* Objectives, Planning, Finance and Execution. Impact on local organizations brand awareness. Added value to JCI members and stakeholders. Impact on local organizations membership growth. Long term impact of project. Impact on local organizations finances.

## 8. Best Local Peace Project

Projects focus on some of the UN’s Sustainable Development Goals with the intent to educate and create dialogue across cultures, demographics, genders, ages, society issues, and communities. With the objective of creating peace, locally and globally, these projects are of benefit to communities and individuals working together towards the great good.

*Project Examples:* Anti-Bullying Campaign, Cross-Cultural Dialogue, International Day of Peace, Acts of Kindness, Global/Climate Change Awareness, Earth Day, a Peace Garden, etc...

*Judging Criteria:* Objectives, Planning, Finance and Execution, Cooperation for the ‘Sake of World Peace’, Community Impact, Impact of Local Organization, and Long-term Impact of the Program.

### Some tips for determining how to classify chapter SPE projects

- A fundraising project must be classified in the Award Category according to whom the funds raised are benefiting: the chapter or a charitable cause. Under no circumstances should a project have the primary purpose of raising money for both the chapter and a charitable cause. Choose one (the chapter or a charity) as the primary recipient of the funds (thus indicating under which category the project should be classified) and make it one of the project's goals to also provide money to the second cause.

- **Remember - JCI members from other states will be judging your projects.** You and everyone in your state know what your state's "emphasis" or "priority" projects are. However, many judges from other states may not realize this is a program "adopted by" and supported by all the chapters in your state. Thus, unless you specify in your nomination form that this is a state-supported or state-run project or program, a judge may think that your project was submitted for judging under the wrong category and thus may not rank your project appropriately when judging your entry.
- State emphasis programs or priority projects are classified under the "Best Inter-Organization Collaboration Project" awards category.
- Even if it is a long-running project for your chapter and everyone in your state knows it by name, be sure to consider that the judge may not be familiar with your project or even any project of its type. Be sure to give a solid explanation of the project's concept and its history.

### Single Project Entry Submission

- A specific project may be entered in only one (1) of the eight (8) Single Project Award Categories. Under no circumstances may the same project be submitted and considered for an award in more than one (1) Award Category in the same award year.
- A State Organization may submit up to Three (3) projects in each of the eight (8) Single Project Award Categories. Only projects that are certified by a State President or JCI USA National Vice President will be considered for recognition.
  - A SPE Submission will include a submission form, video, and photos. Additional Substantiation such as extra photos or documents is always welcome. Providing additional substantiation is encouraged as it does assist the judges in getting a full picture of the project.

### Judging Criteria

Each Most Outstanding Local Chapter Single Project Entry (SPE) submission will be judged on criteria that measures the objectives, planning, finance and execution, impact on local organizations brand awareness, added value to JCI members and stakeholders, impact on local organizations membership growth, long term impact of project and impact on local organizations finances. While the judges will be asked to review the submission in its entirety, there are specific criteria for each category with each specific SPE. The judges' attention will be directed to:

- Objectives, Planning, Finance and Execution.
- Impact on local organizations brand awareness.
- Added value to JCI members and stakeholders.
- Impact on local organizations membership growth.
- Long term impact of the project.
- Impact on local organizations finances

*Submissions received without the Submission Form will be judged accordingly and receive zero (0) points for the missing part of the submission.*

## Recognition

In each category, up to ten (10) projects may be recognized annually during the JCI USA Year-End Awards Ceremony. From these ten (10) projects, one (1) top project may be selected in each of the eight (8) SPE Categories. Additionally, the top ten (10) projects in each SPE category are eligible to compete in their corresponding category at JCI Conference of the Americas and/or at JCI World Congress. The JCI USA Awards Chair and Committee will work together with State Organizations to complete submissions of eligible projects to JCI Conference of the Americas and/or JCI World Congress as applicable.

Regardless of the number of SPE Submissions received in an SPE Category, only those submissions meeting the minimum scoring requirements through the judging process will be recognized. This may result in fewer than ten (10) recognitions in a category.

## Best Project of the Year Award

The final round of SPE judging will consist of the first place 'Single Project Entry of the Year' winners from each of the eight (8) SPE categories. Judges assisting in the process to select the Single Project Entry of the Year will rank each of the top submissions from up to eight (8) SPE Categories. The highest ranked SPE will be recognized as the Best Project of the Year at the JCI USA Year-End Awards Ceremony.

## Most Outstanding Local Chapters

### 1. Most Outstanding New Local Organizations - Hampton Whetsell, III Memorial Award

The Hampton Whetsell, III Memorial Award is presented annually to the new local organizations that conduct the most outstanding activities during their first year of affiliation. The first year of activities (from affiliation) must be CONCLUDED between January 1 and December 31, 2024. The top winner of this honor is eligible to compete for “Most Outstanding New Local Organization” at JCI Conference of the Americas. If the nomination receives first place at JCI Conference of the Americas, then it is eligible to be submitted to JCI World Congress.

This award is named for Hampton Whetsell, III. Whetsell's desire to be the best and his will to succeed were recognized during the Annual Meeting in Memphis, Tennessee, where he was presented with the JCI USA “Chapter Pacesetters” award for the largest extension (113 members) in a community of between 850 and 2,500 people. A member for only five months, he was the Chapter President of the Bowman, South Carolina Junior Chamber. He died in an auto accident on August 18, 1989, while driving home from working on a chapter extension.

### 2. Most Outstanding Local Organizations - Clarence H. Howard Memorial Award

The Clarence H. Howard Memorial Award is presented annually to the most outstanding local chapter organizations with the best programming. This category is for chapters that were chartered prior to January 1, 2024. This award is named in honor of Clarence H. Howard, who while President of the St. Louis Chamber, was a major contributor to Henry Giessenbier’s success in founding the St. Louis Junior Chamber and JCI USA.

### 3. Most Outstanding Chapter in the Nation - Harold A. Marks Memorial Award

The Harold A. Marks Memorial Award is the highest achievement a chapter can attain in the JCI USA Organization. The chapter receiving this award is chosen from the Clarence H. Howard Memorial Award winners and is recognized as the Most Outstanding Junior Chamber Chapter in the Nation. The top winner of this honor is eligible to compete for “Most Outstanding Local Organization” at JCI Conference of the Americas. If the nomination receives first place at JCI Conference of the Americas, then it is eligible to be submitted to JCI World Congress.

This award is named in honor of Harold A. Marks, who served as the National Director of the Arizona Jaycees in 1935-1936. He passed away in March of 1938 while flying to the installation of a new chapter. The National President shall select one (1) recipient of the Harold A. Marks Memorial Award and will require Year to Date Membership Growth. To be considered for this award the chapter must have submitted for and been recognized for the Clarence H. Howard Memorial Award.

*There is no submission for Harold A. Marks Memorial because consideration for this award requires that the chapter must have submitted for and received the Clarence H. Howard Memorial Award.*

#### Most Outstanding Local Chapters Submission

- Each State Organization will be eligible to submit up to five (5) Local Chapters for the Clarence H. Howard Award.
- Each State Organization will also be eligible to submit up to two (2) Local Chapters for the Hampton Whetsell Memorial Award
- There is no submission for Harold A. Marks Memorial because consideration for This award requires that the chapter must have submitted for and received the Clarence H. Howard Memorial Award.

*To be considered for the Howard or Whetsell Awards the submission must include the Submission Form and the Local Chapters Annual Report.*

## Judging Criteria

Each Most Outstanding Chapter submission will be judged on criteria that measures the planning, implementation, and impact of the annual report. While the judges will be asked to review the submission in its entirety, there are specific criteria for each category to which the judges' attention will be directed. The specific criteria are:

- Strategic Plan
- Recruitment Strategy
- Results in brand awareness, membership growth and financial surplus
- Individual Development Programs and Results
- Community Development Programs and Results
- International Development Programs and Results
- Economic/Business Development Programs and Results

## Recognition

- Up to three (3) New Chapters will be recognized with the Hampton Whetsell, III Memorial Award
- Up to five (5) chapters will be recognized with a Clarence H. Howard Award annually.
- One of the winners of the Clarence H. Howard Award will be the recipient of the Harold A. Marks Memorial Award
- All award winners will be recognized during the JCI USA Year-End Awards Ceremony.

## Most Outstanding Innovation from a Chapter

### 1. Visionary Award

This award is presented annually to the local chapter which best exemplifies the JCI Mission and Vision through innovation against adversity. The award is creatively named from our 100 years as an organization stemming from the vision of Henry Giessenbier in the 1910's.

This award is based on the following criteria:

- A chapter's ability to be innovative, agile and think on their feet when the time calls for it;

- Participation in the creation of new projects to combat adversity stopping our chapters from doing what they have always done; (i.e. projects related to a pandemic, natural disaster, community tragedy)
- exemplification of our founder Henry Giessenbier and his visionary ways.

### Most Outstanding Innovation Submission

- Each State Organization will be eligible to submit up to five (5) chapters for consideration of the Visionary Award.
- Chapters actions and achievements must have occurred between January 1, 2024, and December 31, 2024.
- Along with the submission form, substantiation to support the chapter's visionary innovation including photos, video, and other documents is required. We do encourage letters of recommendation from any organizations or municipalities where there was collaboration with the chapter to complete projects, though not required.

### Judging Criteria

Each Visionary Award Chapter submission will be judged on criteria that measure the agility, innovation, and quick thinking of chapters during times of adversity and forced change. While the judges will be asked to review the submission in its entirety, there are specific criteria for each category to which the judges' attention will be directed. The specific criteria:

- A chapter's ability to be innovative, agile and think on their feet when the time calls for it;
- Participation in the creation of new projects to combat adversity stopping our chapters from doing what they have always done; (i.e. projects related to a pandemic, natural disaster, community tragedy)
- exemplification of our founder Henry Giessenbier and his visionary ways.

### Recognition

Up to three (3) chapters will be recognized with a Visionary Award during the JCI USA Year-End Ceremony.

# Most Outstanding Local Members

## 1. JCI USA Youth Spotlight

The JCI USA Youth Spotlight award is presented annually to a child of an active JCI Member not affiliated with a JCI Youth Chapter who has achieved outstanding performance in support of their parents' JCI Chapter.

## 2. Most Outstanding New Members - C. William Brownfield Memorial Award

The C. William Brownfield Memorial Award is presented annually to the new local members who best exemplify the JCI Mission and Vision during their first year as a member. The first year of activities must CONCLUDE between January 1 and December 31, 2024.

The award is named in memory of Bill Brownfield, the author of the JCI Creed. Bill Brownfield recognized that the spirit and enthusiasm of the Junior Chamber movement came from the spirit of first-year members.

This award is based on the following criteria (Scoring Rubric can be reviewed in Appendix E):

- individual's impact on local organization;
- community impact through individual's actions;
- participation in training and business programs;
- participation in local, state, national and international events;
- exemplification of JCI USA values in JCI activities and in personal life.

The top winner of this honor is eligible to compete for "Most Outstanding New Member" at JCI Conference of the Americas. If the nomination receives first place at JCI Conference of the Americas, then the nomination is eligible to be submitted to JCI World Congress.



### 3. Most Outstanding Local Members

#### *John H. Armbruster Memorial Award*

The John H. Armbruster Memorial Award is presented annually to the local members who best exemplify the JCI Mission and Vision during the awards year.

The award is named in memory of John H. Armbruster in recognition of his long and faithful service to JCI USA. He was a charter member of the St. Louis Junior Chamber and throughout his life he contributed to the organization. John H. Armbruster founded The Junior Chamber Crew Club and through his publication, Log of the S.S. Fellowship, he kept up correspondence with members across the nation and throughout the world for more than 40 years.

This award is based on the following criteria:

- individual's impact on local, state and national organizations;
- community impact through individual's actions;
- participation in local, state and JCI USA and JCI events;
- exemplification of JCI USA values in JCI activities and personal life.

The top winner of this honor is eligible to compete for 'Most Outstanding Member' at JCI Conference of the Americas. If the nomination receives first place at JCI Conference of the Americas, it is eligible to be submitted to JCI World Congress.

### 4. Most Outstanding Families

#### *Andrew and Charlotte Mungenast Memorial Award*

The Andrew and Charlotte Mungenast Memorial Award is presented annually to the families who promote and exemplify the objectives and beliefs of the JCI Creed.

The award is named in memory of Andrew and Charlotte Mungenast. Andrew was one of the founders of JCI USA and served as its first Secretary. Both JCI USA and JCI considered his wife, Charlotte, to be "The First Lady of Jaycees."

A "family" is defined as: a married couple with or without children, a single parent with one or more children, an unmarried couple with or without children who reside together for 12 months or longer, and siblings (i.e. brother/sister, brother/brother, sister/sister) living in the same household. At least one (1) member of the family unit must be a JCI member in good standing and meet the criteria listed under the "General Eligibility Requirements" in this manual. A family is eligible to win once every five (5) years.

This award is based on the following criteria:

- family's impact on local and state organization;
- community impact through family's actions;
- participation in JCI USA and JCI events;
- exemplification of JCI USA values in JCI activities and personal life.

### Most Outstanding Members Submission

- Each State Organization will be eligible to submit up to five (5) members or families for consideration.
- Members serving on the current or past JCI USA Executive Team and Board of Directors are not eligible for the C. William Brownfield nor John H. Armbruster Award. They are eligible for the Andrew and Charlotte Mungenast Memorial Award.
- All submissions must include a submission form and a headshot photo or photo of the family unit suitable for use in promotional materials and/or news releases.

### Judging Criteria

Each Most Outstanding Member submission will be judged on criteria that measure the leadership, motivation and inspiration of the member. While the judges will be asked to review the submission in its entirety, there are specific criteria for each category to which the judges' attention will be directed. The specific criteria are detailed above in each category.

- Leadership, Motivation and Inspiration of Members
- Community Impact
- Impact on Local Organization
- Participation in State Events
- Exemplification of JCI USA Values

### Recognition

Up to three (3) members or families will be recognized with an Outstanding Member Award during the JCI USA Year-End Awards Ceremony.

# Most Outstanding Individual Growth of a Member

## 1. Empowerment Award

This award is presented annually to the local members who best exemplify the JCI Mission and Vision through personal and professional growth outside of their JCI Experiences. The award is creatively named from our Mission statement and our underlying WHY as an organization.

This award is based on the following criteria:

- individual's impact on their personal growth and development;
- participation in training, orientation and development programs;
- participation in external (outside of JCI) community events;
- exemplification of JCI WHY – EMPOWERMENT.

## Most Outstanding Individual Growth of a Member Submission

- Each State Organization will be eligible to submit up to five (5) members for the Empowerment Award
- Members can be serving in any role within JCI during the 2024 calendar year and accomplishments cited in the submission can be prior to, as well as, occurring during 2024.
- Submissions will include the Submission Form and a headshot photo. Headshot photos may be used by JCI USA for promotional purposes.
- We do encourage letters of recommendation from any organizations or municipalities where there was collaboration with the chapter to complete projects, though not required.

## Judging Criteria

Each Most Outstanding Individual Growth Member submission will be judged on criteria that measure the agility, innovation, self-motivation, and inspiration of the member in their life outside of JCI. While the judges will be asked to review the submission in its entirety, there are specific criteria for each category to which the judges' attention will be directed. The specific criteria are:

- Showing leadership in their personal/professional life beyond JCI;
- Self-Motivation, Ambition, Drive and endurance exemplified;

- Impact and participation in the community beyond their chapter;
- Exemplification of our JCI WHY of Empowerment.

## Recognition

Up to three (3) members will be recognized in each awards category at Year-End Awards for JCI USA.

## Most Outstanding Local Officers

### 1. Most Outstanding Local Chapter Officer - Heidi Juttner Memorial Award

The Heidi Juttner Memorial Award is presented annually to the most outstanding Local Chapter Officer in the nation. This includes, but is not limited to, Vice President, Program Manager, Secretary, Treasurer, or any other Local Chapter Board position other than the Chapter President or Immediate Past President.

The award is named in honor of Heidi Juttner from Florida. Juttner served as Local Chapter President for the Daytona Beach Jaycees and as State President for the Florida Jaycees. Additionally, she served several years on the National Training Task Force. She passed away from cancer in 2011.

### 2. Most Outstanding Local Presidents - Charles Kulp, Jr. Memorial Award

The Charles Kulp, Jr. Memorial Award is presented annually to the most outstanding Local Presidents in the nation. The top winner of this honor is eligible to compete for “Most Outstanding Local President” at JCI Conference of the Americas. If the nomination receives first place at JCI Conference of the Americas, then the nomination is eligible to be submitted to JCI World Congress.

The award is named in honor of Charles Kulp, Jr. from Delaware. Kulp served as the Local Chapter President for the Wilmington Junior Chamber and as a State President for the Delaware Jaycees. He died of cancer in 1979. The Kulp memorial award will require Year to Date Membership Growth in the local chapter which the nominee is presiding over.

## Most Outstanding Local Officers Submission

- Each State Organization will be eligible to submit up to five (5) Local Officers
- Each State Organization will be eligible to submit up to three (3) Local Presidents.
- **Members serving on the current or past JCI USA Executive Team and Board of Directors are not eligible for the Heidi Juttner nor the Charles Kulp, Jr. Memorial Awards.**
- In addition to the Submission Form a Headshot Photo is required to be included with the submission. Photos submitted may be used by JCI USA for promotional purposes.

## Judging Criteria

Each Most Outstanding Local Officer submission will be judged on criteria that measure the leadership, motivation, and inspiration of the member. While the judges will be asked to review the submission in its entirety, there are specific criteria for each category to which the judges' attention will be directed. The specific criteria for these awards are:

- Leadership, Motivation and Inspiration of Officers
- Exemplification of JCI USA values in JCI activities and personal life
- Impact on Local Organization
- Participation in local, State, National and International Events

## Recognition

- Up to five (5) outstanding Local Officers will be recognized at the JCI USA Year-End Awards Ceremony
- Up to three (3) outstanding Local Presidents will be recognized at the JCI USA Year-End Awards Ceremony

# State Recognition Awards

## Most Outstanding State Programs

### 1. Best State Flagship Programs - *Dennis Hamilton Memorial Award*

The Dennis Hamilton Memorial award is presented annually to the Best State Flagship Programs. A State Flagship Program contributes to the JCI USA Mission and Vision and involves Members and Local Chapters across the State Organization.

This award is named in honor of Dennis Hamilton, who while serving as the Administrative Vice President of the Oklahoma Junior Chamber, died in an airplane crash on April 7, 1973 at the age of 30.

### Dennis Hamilton Memorial Award Judging Criteria

- Strategy and Implementation
- Benefit to and Participation of Local Chapters and Members
- Impact on brand awareness
- Public Relations
- Partnerships
- Finances
- Long Term Impact of the Program

The top winner of this honor is eligible to compete for the “Best National Flagship Program” at JCI Conference of the Americas. If the nomination receives first place at JCI Conference of the Americas, then it is eligible to be submitted to JCI World Congress.

### 2. Best State Growth and Development Program - *Steve Little Memorial Award*

The Steve Little Memorial Award is presented annually to the Best State Growth and Development Program. State organizations focused on the growth and continued development of the JCI USA movement create a larger impact and demonstrate the JCI Mission and Vision. The top winner of this honor is eligible to compete for the “Best National Growth and Development Program” at JCI Conference of the Americas. If the nomination receives first place at JCI Conference of the Americas, then it is eligible to

be submitted to JCI World Congress.

This award is named for Steve Little, who while serving as President of the Wisconsin Junior Chamber, died in a car accident in January 1982 on his way to a JCI USA Meeting.

### Steve Little Memorial Award Judging Criteria

- Strategy and Implementation
- Involvement of the State Board of Directors and Members
- Methods of Implementation
- Results Achieved
- Long Term Impact of the Program

### Most Outstanding State Programs Submission

- Each State Organization will be eligible to submit up to two (2) statewide programs in each category.

### Recognition

Up to three (3) Statewide Programs in each category will be recognized at the JCI USA Year-End Awards Ceremony.

## Most Outstanding State Organizations

### 1. Best State Organizations - *George O. Wilson Memorial Award*

The George O. Wilson Memorial Award is presented annually to the Best State Organizations. This award is named for George O. Wilson who served as President of JCI USA from 1921-1922.

### Most Outstanding State Organizations Submission

- Each State Organization will be eligible to submit for this award.
- Submissions must include the submission form as well as photo, video, or document substantiation to support the submission.

## Judging Criteria

Each Most Outstanding State Organization submission will be judged on criteria that measure the planning, implementation, and impact of the programming. While the judges will be asked to review the submission in its entirety, there are specific criteria for each category to which the judges' attention will be directed.

The specific criteria are:

- Plan of Action
- Recruitment Strategy
- Individual Development Programs and Results
- Community Development Programs and Results
- International Development Programs and Results
- Economic/Business Development Programs and Results

## Recognition

Up to three (3) State Organizations in this category will be recognized at the JCI USA Year-End Awards Ceremony.

## Most Outstanding State Officer

### 1. Outstanding State Membership Director

The Outstanding State Membership Director award is presented annually to the most outstanding State Membership Director, Region Director, District Director, or any other position related to Membership. The current and immediate past State Presidents are not eligible for consideration.

### 2. Outstanding State Auxiliary Officer or Committee Member

The Outstanding State Auxiliary Officer or Committee member award is presented annually to the most outstanding State Organization Auxiliary Officers or Committee Members.



### 3. Most Outstanding State Organization Executive Officers - R. Bradley Trafton Award

The R. Bradley Trafton Memorial Award is presented annually to the most outstanding State Organization Executive Officers in the nation. Offices eligible for consideration include but are not limited to: Vice President, Secretary, Treasurer, or any other State Board Executive position other than the State President and Immediate Past State President. Officers eligible for submission to the R. Bradley Trafton Award are not eligible for submission as an Outstanding State Auxiliary Officer or Committee Member.

This award is named in honor of R. Bradley Trafton, a past JCI USA staff officer from New Hampshire. He also served as State President, Internal Vice President, and Chaplain (twice) for the New Hampshire Junior Chamber.

### 4. Most Outstanding State Presidents - Allen Whitfield Memorial Award

The Allen Whitfield Memorial Award shall be presented annually to outstanding State Presidents who have shown exemplary dedication and commitment to the Junior Chamber movement.

The award is named in honor of Allen Whitfield from Iowa. He served as National President in 1936-37 and passed away in 1984.

### 5. Most Outstanding State President in the Nation - Clayton Frost Memorial Award

The Clayton Frost Memorial Award is presented annually to the most outstanding State President. The award is named in honor of Clayton Frost, former North Carolina State President, who died in April 1946 in an automobile accident while returning from the installation of a new chapter.

The National President, after conferring with the National Vice Presidents and reviewing the winners of the Allen Whitfield Memorial Award, shall select the recipient of the Clayton Frost Memorial Award. To be eligible for the award, the President's state must be at year-to-date growth for the award year and have submitted for and received the Allen Whitefield Memorial Award.

## Most Outstanding State Officers Submission

- Each State Organization will be eligible to submit up to two (2) State Membership Directors.
- Each State Organization will be eligible to submit up to two (2) State Auxiliary Officers or Committee Members.
- Each State Organization will be eligible to submit up to two (2) State Executive Officers.
- Each State Organization will be eligible to submit up to one (1) State President.
  - All submissions will require the Submission Form in addition to a headshot photo suitable for promotional use.

## Judging Criteria

Each Most Outstanding State Officer submission will be judged on criteria that measure the leadership, motivation and inspiration of the member. Along with specific criteria:

- Leadership, Motivation and Inspiration of Members
- Impact on State Organization
- Participation in State, National, and International Events
- Exemplification of JCI USA Values

## Recognition

- Up to three (3) outstanding Membership Directors, Auxiliary Officer or Committee Members, and State Officers will be recognized at the JCI USA Year-End Awards Ceremony.
- Up to five (5) State Presidents will be recognized at the JCI USA Year-End Awards Ceremony.
- One (1) State President will be recognized as the recipient of the Clayton Frost Memorial Award.

# National Recognition Awards

## Outstanding National Program Manager

### 1. Outstanding National Program Manager

The Outstanding National Program Manager Award is presented annually to the most outstanding Program Managers in JCI USA.

### Most Outstanding National Program Manager Submission

- Any JCI USA Executive Committee Member may nominate a JCI USA Program Manager for this award by submitting a letter of recommendation to the JCI USA President.
- Letters of recommendation must be submitted no later than 11:59 PM HST on January 30, 2025 by email.

### Judging Criteria

Each Program Managers' impact will be judged on criteria that measure the leadership, motivation, and inspiration of the membership. The specific criteria for this award are:

- Administration
- Leadership, Motivation and Inspiration of Members
- Impact on Projects
- Communication
- Participation in State, National, and International Events
- Exemplification of JCI USA Values

### Recognition

The National President shall select the recipient of the Outstanding National Program Manager Award. Up to three (3) National Program Managers may be recognized.

# Most Outstanding National Vice President

## 1. Most Outstanding National Vice President - Don Cavelli Memorial Award

The Don Cavelli Memorial Award is presented annually to the most outstanding National Vice President in the nation.

The award is named in honor of Don Cavelli, of Ogden, Utah, former State President of Utah and a past National Vice President. Cavelli passed away in October 1977 from a rare blood disease.

### Don Cavelli Memorial Award Submission

- Any member of the JCI USA Board of Directors who wishes to provide a letter of support for a specific National Vice President should email their letter to the National President no later than 11:59 PM HST January 30, 2025.

### Judging Criteria

Each National Vice President's impact will be judged on criteria that measure the leadership, motivation, and inspiration of the membership. The specific criteria for this award are:

- Administration
- Leadership, Motivation and Inspiration of Members
- Impact on Projects
- Communication
- Participation in State, National, and International Events
- Exemplification of JCI USA Values

### Recognition

The National President shall select the recipient of the Don Cavelli Memorial Award.

## Special Partners

### 1. Special Partner Award - Rob Ray Memorial Award

The Rob Ray Memorial Award is presented annually to those Very Important Persons (VIPs) of State and National Officers who have gone above and beyond to keep the home fires burning while their significant other worked for the organization.

#### Rob Ray Memorial Award Submission

- Each State Organization will be eligible to submit one (1) for this award.
- Please submit a recommendation letter and a headshot photo suitable for promotional use.
- Submissions are due by email to the National President no later than 11:59 PM HST January 30, 2025.

#### Recognition

The National President shall select up to five (5) recipients of the Rob Ray Memorial Award.

## Top Membership Recruiters

### 1. Membership Recruiters (25+)

Each year, JCI USA recognizes those members who are helping to further the JCI Movement, Mission, and Vision through membership growth.

#### Top Membership Recruiters Submission

- Each State Organization shall submit the names of the individuals who have recruited 25+ members into the organization during the 2024 calendar year.

## Recognition

The JCI USA National Membership Director shall provide to the JCI USA President and Awards Co-Chairs a verification of the names that have met the recruitment/growth milestones mentioned above. There is no limit to the number of awards that will be presented in this category.

## Chapter Growth

### 1. Chapter Growth (Double/Triple)

Each year, JCI USA recognizes those chapters who are helping to further the JCI Movement, Mission, and Vision through membership growth.

### Chapter Growth Submission

- The State Organization shall submit the names of the chapters that have doubled or tripled their January 1, 2024 membership. This submission will be included in the awards certification survey that is to be completed by the State Presidents. The submitted chapters will be reviewed by the Membership Development Directors and National President to confirm growth was not because of corrections of missed renewals in GlueUp.

## Recognition

The JCI USA National Membership Director shall provide to the JCI USA President and Awards Co-Chairs a verification of the chapters that have met the recruitment/growth milestones mentioned above. There is no limit to the number of awards that will be presented in this category.

# Presidential Medallions

## 1. Presidential Medallions

Each year, the National President recognizes individuals who have been instrumental in carrying out the vision of the organization during their year as President. To honor these accomplishments, the National President will present a Presidential Medallion to these individuals.

### Submission

- There is no submission process for a Presidential Medallion.

### Recognition

Presidential Medallions are awarded at the Annual Awards and Recognition Ceremony at the discretion of the National President. Up to fifty (50) individuals may be recognized.

# Appendices

## Appendix A - Year-End Awards Reference Chart

### Local Recognition Awards

Award Name	Recognition	Maximum Submission per State	Reviewed by	Maximum Number Recognized	Submission Route	Maximum Submission to COA and/or WC
Chapter Growth (Double/Triple)	Double or Triple Chapter Size	No limit	National President and National Membership Director(s)	No limit	Certification Form	
SPE	Local Chapter Projects	3 per category	General Judges	10 per category	Portal	10 per category to COA and/or WC
Whetsell	New Local Chapter (less than 2 years)	2 per state	General Judges	Top 3	Portal	1 submission (Most Outstanding New Local Organization) to COA*
Visionary Award	Outstanding Chapter Innovation	5 per state	General Judges	Top 3	Portal	
Empowerment Award	Outstanding Individual Growth	5 per state	General Judges	Top 3	Portal	
Mungenast	Outstanding Jaycee Family	5 per State	General Judges	Top 3	Portal	



JCI USA Youth Spotlight	Outstanding children of active JCI members	5 per State	General Judges	Top 3	Portal	
-------------------------	--	-------------	----------------	-------	--------	--

Howard	Outstanding Local Organization	5 per State	General Judges	Top 5	Portal	
Marks	The best of the Howard winners	N/A	National President	1	Based on the Howard Submissions	1 Submission (Most Outstanding Local Organization) to COA*

### State Recognition Awards

<b>Award Name</b>	<b>Recognition</b>	<b>Maximum Submission Per State</b>	<b>Reviewed By</b>	<b>Maximum Number Recognized</b>	<b>Submission Route</b>	<b>Maximum Submission on to COA and/or WC</b>
Hamilton	Best State Flagship Programs	2 per State	General Judges	Top 3	Portal	1 Submission (Best Flagship Program) to COA
Little	Best State Growth and Development Program	2 per State	General Judges	Top 3	Portal	1 Submission (Best National Growth and Development Program) to COA

Trafton	Outstanding State Executive Officers	2 per State	General Judges	Top 3	Portal	
---------	--------------------------------------	-------------	----------------	-------	--------	--

Outstanding State Membership Director	Outstanding State Officers	2 per State	General Judges	Top 3	Portal	
Outstanding State Auxiliary Officer	Outstanding State Officers	2 per State	General Judges	Top 3	Portal	

Whitfield	Outstanding State President	1 per State	National President	Top 5	Portal	
-----------	-----------------------------	-------------	--------------------	-------	--------	--

Wilson	Outstanding State Organization	1 per State	National President	Top 3	Portal	
Frost	Recognized the best of the Whitfield Winners	N/A	National President	1	Based on Whitfield Submission	

### National Recognition Awards

<b>Award Name</b>	<b>Recognition</b>	<b>Maximum Submission per State</b>	<b>Reviewed By</b>	<b>Maximum Number Recognized</b>	<b>Submission Route</b>	<b>Maximum Submission on to COA and/or WC</b>
Most Outstanding National Program Manager	Most Outstanding National Program Manager	N/A	National President	Top 3	Letter of Recommendation by JCI USA Executive Committee Member	

Cavelli	Outstanding National Vice President	N/A	National President	1	Letter of Recommendation by any member of JCI USA Board of Directors, including State Presidents	
Ray	Special Partner of State Presidents or National Officers	1 per State	National President	Top 5	Letter of Recommendation by State Organization	

25+ Member Recruiters	New member recruitment of 25+	No Limit	National President and National Membership Director	No limit	Certification Form	
-----------------------	-------------------------------	----------	---	----------	--------------------	--

Presidential Medallions	Presidential Recognitions	N/A	National President	50	Determined by National President	
-------------------------	---------------------------	-----	--------------------	----	----------------------------------	--

## Appendix B - Best Practices for Creating Nominations

### Outstanding Local Member and Officers, State Officers, Most Outstanding NVP, Special Partner

- Interview Chapter members to get quotes as to why the nominee is so great and deserves to be nominated (don't fill out a nomination for yourself)
- Refrain from being general
  - Don't: "This member attended all meetings" or "This member was very impactful"
  - Do: This member attended 7 Chapter Meetings, completed 4 Chapter visits, and participated in all 15 Chapter projects over the year.
- TELL A STORY about that individual
- Remember, the judges will know NOTHING about the nominee. So 'paint a story' with your words showcasing why this individual is deserving of such a honor

### Outstanding Local Single Project Entry (SPEs), Local Chapters, State Program, State Organization

- TELL A STORY
  - Remember, the judges will know NOTHING about your project/chapter/program/organization. 'Paint a story' with your words so they get a FULL picture as to why it is outstanding.
  - Keep each answer, in your story/nomination, to less than 600 words.
  - Provide a FULL financial picture as to what happened with the project
  - Be specific with what the promotional strategy included – what was the order in which tasks were accomplished and what resources/partnerships were created to execute such tasks
- Include what sort of impact was made on the Chapter, State, and Community – include quantitative support

### All Categories

- Spell Check....Spell Check.....Spell Check
- Ask someone else to review the nomination
- Refrain from waiting until the last minute to complete the nominations – you can submit early!
- The following three should all match-up:

- Box checked on the nomination form
- The file name of the nomination
- Portal the nomination form is submitted to
- Nominations are qualitative AND quantitative.
  - How many events?
  - How many meetings?
  - How many people were impacted?
  - Pull the numbers and data from your PMG
- Provide an answer to ALL the questions (If it is left blank, then you get 0 points). Also, this will make it easier to pass along your FULL nomination form from National Awards to International awards.
- If you have ANY QUESTIONS, then ASK – the Committee’s contact information is in Appendix D
- **Don’t forget to include the required video and photos**

## Appendix C - National Submissions for International Awards

### National Categories for International Advancement Best of the Best Awards

The top winners for these categories are eligible to compete at JCI Conference of the Americas. If the nomination receives first place at JCI Conference of the Americas, it is eligible to be submitted to JCI World Congress.

1. Best National Flagship Program (via Dennis Hamilton Memorial Award)
2. Most Outstanding Local Organization (via Harold A. Marks Memorial Award)
3. Most Outstanding New Local Organization (via Hampton Whetsell, III Memorial Award)
4. Best National Growth & Development Program (via Steve Little Memorial Award)
5. Most Outstanding New Member (via C. William Brownfield Memorial Award)
6. Most Outstanding Member (via John H. Armbruster Memorial Award)
7. Most Outstanding Local President (via Charles Kulp, Jr. Memorial Award)
8. Most Outstanding National President

## Multi-Entry Awards

JCI USA may submit more than one award entry per category, with a maximum of 10 entries per category. Those listed in parenthesis are the JCI USA categories.

1. Best JCI RISE Project
2. Best Local Business and Entrepreneurship Program
3. Best Local Individual Development Program (Personal Skills SPE)
4. Best Local Growth and Development Program (Growth & Development SPE)
5. Best International Cooperation Project (Inter-Org Collab SPE (with other JCI chapters around the world)
6. Best Inter-Organization Collaboration Project (Inter-Org Collab SPE (with other organizations outside of JCI)
7. Best Local Community Impact Program (Community Empowerment SPE, Long Term Community Development SPE, and Economic SPE)
8. Best Local Global Goals Project (Global Goals SPE , Peace SPE)

## Anticipated Submissions Timeline for International Awards

### Opening of Applications and Volunteer Judges:

Conference of America: March 2025

2024 JCI World Congress: August 2025

### Deadline for Applications and Volunteer Judges:

Conference of America: April 2025

2024 JCI World Congress: September 2025

### Judging Deadline

Conference of America: April 2025

2024 JCI World Congress: October 2025

*For more information on international awards, please refer to the JCI Awards Guide and JCI Awards Toolkit found in the JCI Library at [www.jci.cc](http://www.jci.cc).*

## Appendix D - Scoring Rubrics

View the questions and scoring breakdown [here](#).

The JCI USA and JCI Plan of Action are linked here for easy reference as they are referred to in questions.

**JCI Mission Statement:** To provide leadership development opportunities that empower young people to create positive change.

**JCI Vision Statement:** To be the leading global network of young active citizens.

# 2024 National Awards Committee

## Program Manager

### **Amanda Birch**

2024 National Awards PM

[abirch21@yahoo.com](mailto:abirch21@yahoo.com)

(319) 212-8331

Iowa (Central Time Zone)

## Committee Members

### ***Jessi Neighbors, IL***

## JCI USA Executive Members / Focus Area of Impact

### **Catie McNew**

2024 National Vice President

[Cmcnew@jciusa.org](mailto:Cmcnew@jciusa.org)

(308) 660-6135 (Central Time Zone)

Nebraska (Central Time Zone)

### **Vanessa Birchler**

2024 National President

[vbirchler@jciusa.org](mailto:vbirchler@jciusa.org)

(808) 227-0761

Illinois (Central Time Zone)



## **2024 Awards Program**

### **TIMELINE / DUE DATES**

#### **Eligibility**

**January 1 - December 31, 2024** - All individuals nominated for recognition must be members in good standing

**January 31, 2025** – 2024 dues paid in full to be eligible

**January 1, 2024 - December 31, 2024** recognition timeframe for all projects and individuals

#### **Certification Timeline**

**November 1, 2024** - State certification form available in the documentation library

**January 20, 2025** - State certification must be completed by 11:59pm HST

#### **Submission Timeline**

**November 1, 2024** - Submission Portal opens

**January 30, 2025** – Submission Portal closes at 11:59pm HST

#### **Judges Timeline**

**February 1, 2025** - Due date for a signed Judges Acknowledgement Form

**February 3, 2025** - Due date for State Presidents to inform Awards Committee that an alternate judge is needed by 11:59 HST

**February 5, 2025** - Due date for State Presidents to provide an alternate judge without penalty by 11:59 HST

**February 6, 2025**- Judges Meeting 8:00 pm CST

**February 10, 2025** - Judges assignments given

**February 25, 2025** - Judging due by 11:59pm HST

#### **Virtual Office Hours** *(subject to change)*

**Wednesday November 13, 2024** - 8pm CST

**Thursday December 19, 2024** - 8pm CST



*Time Zones:  
HST - Hawaii Standard Time  
CST - Central Standard Time*